



# Police and Crime Panel

Chief Constable Olivia Pinkney

# Police and Crime Panel

- The Impact of Covid-19 and the policing response
- Funding and current risks to the Organisation
- Operation Uplift update

## Covid-19 the Policing Response

Overall reduction in calls / change in demand profile

4E's Approach and Covid-19 demand

Criminal Justice challenge

Looking after our people

Reset and recovery



2020/21 Forecast is £0.9M  
underspend

Impact of Covid

MTFS in development

Funding Snapshot

National Picture and  
implications

Challenging budget, better  
workforce



Uplift

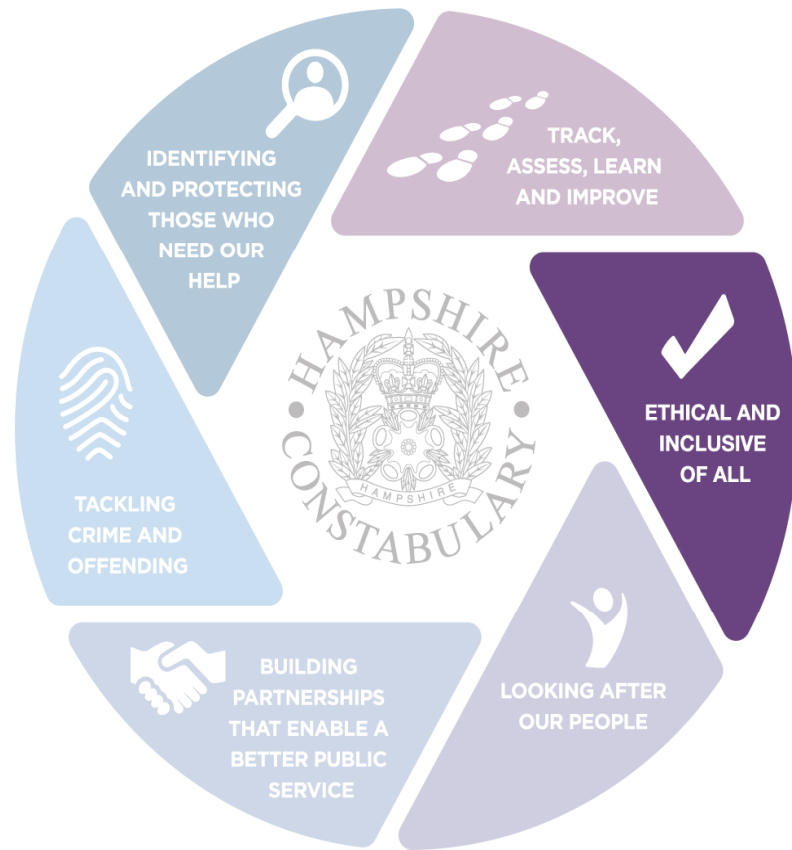
The '91'

Ethical and Inclusive of All

Recruitment Diversity

Where are officers being posted?





# Allocation of Uplift officers

Allocation of Officers per District	
District	Number of Officers
Hart	4
Rushmoor	5
Eastleigh	7
Basingstoke	9
Fareham	4
Gosport	5
Havant	8
New Forest	8
Portsmouth	18
East Hants	4
IOW	9
Countrywatch	1
LPDU	1
Southampton	20
Test Valley	5
Winchester	5



# Police and Crime Panel

Questions?